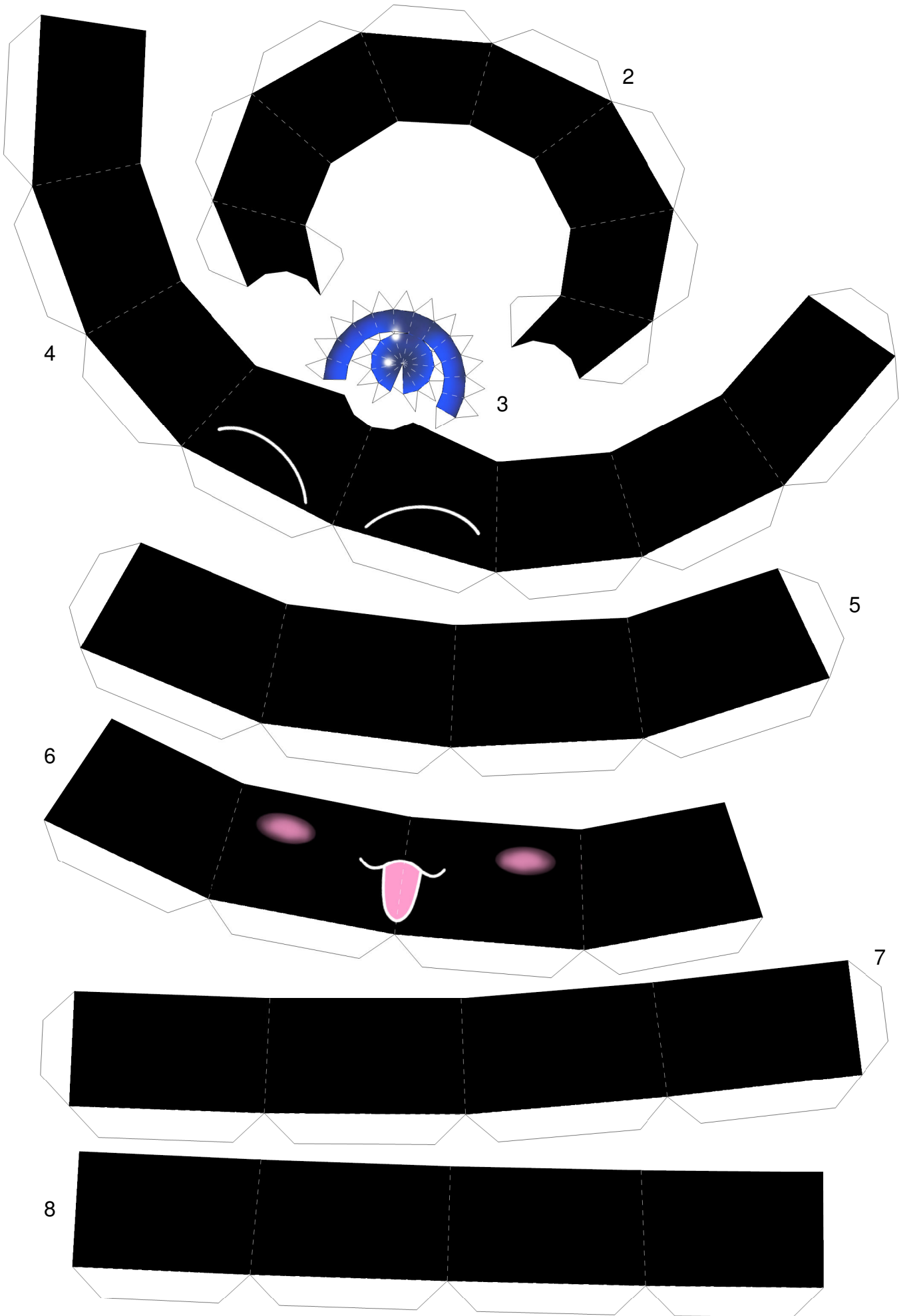


Mokona Papercraft

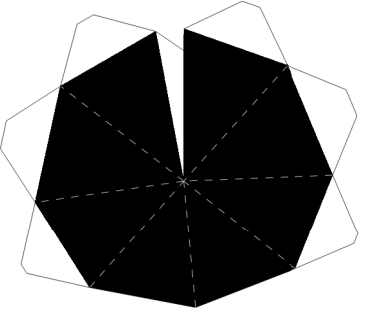
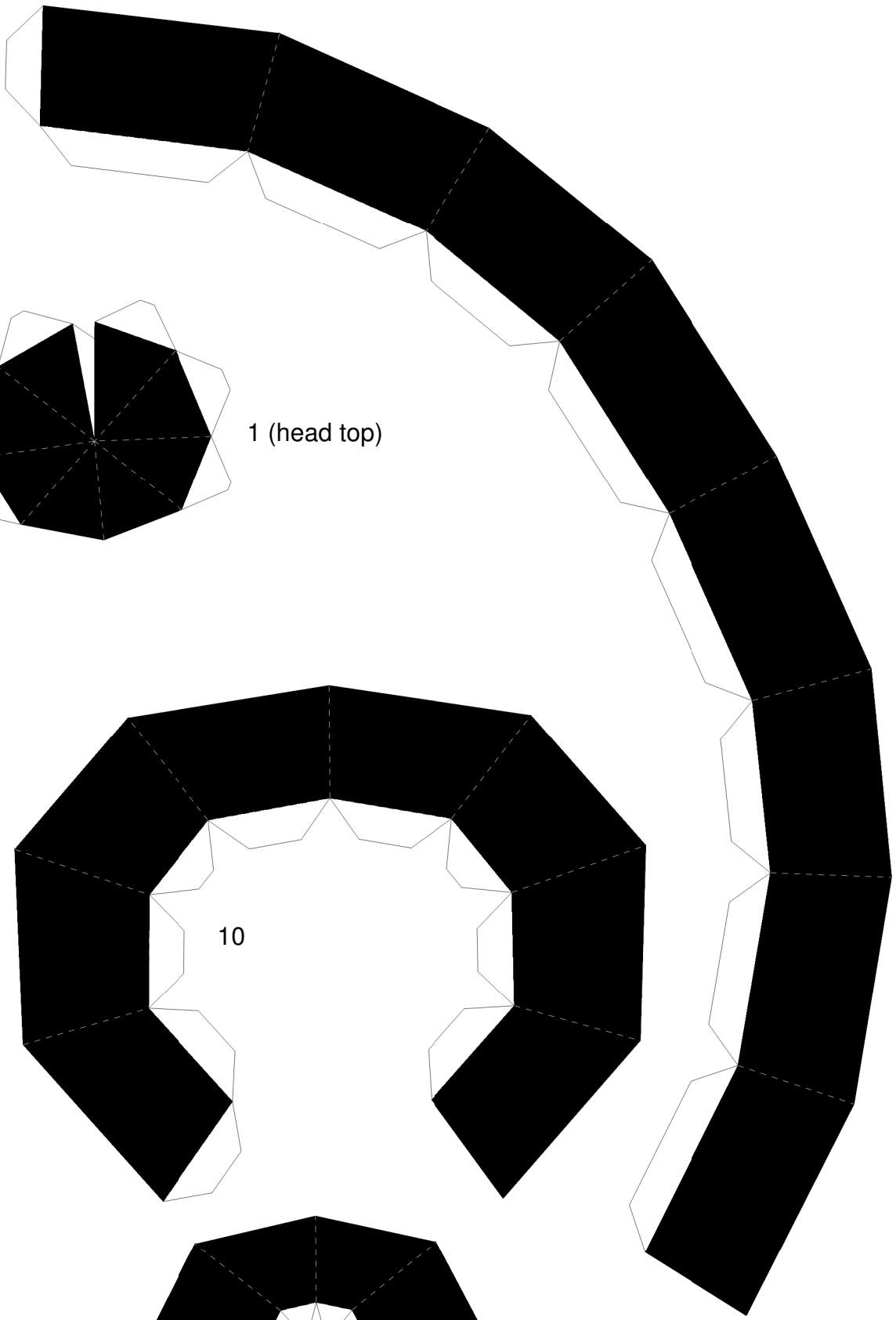


By Lyrin

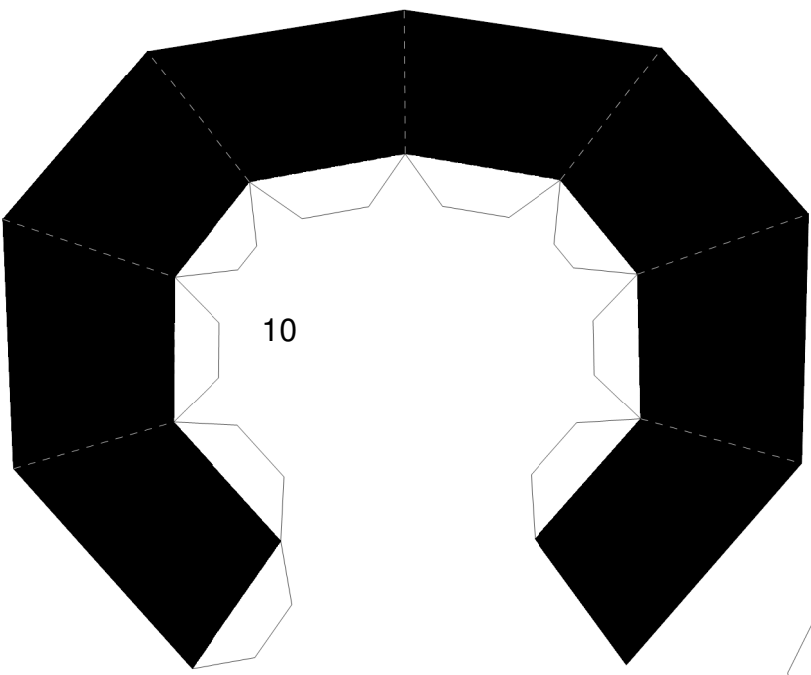
<http://lyrin-83.deviantart.com/>



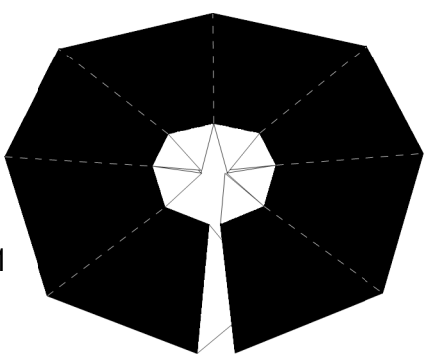
9



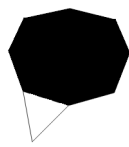
1 (head top)



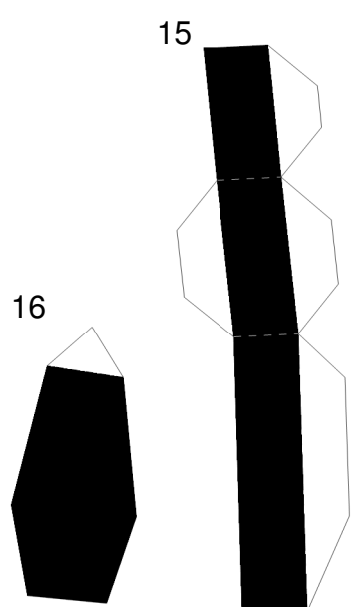
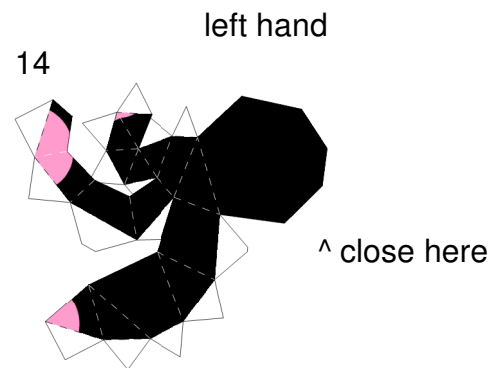
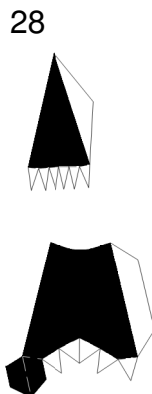
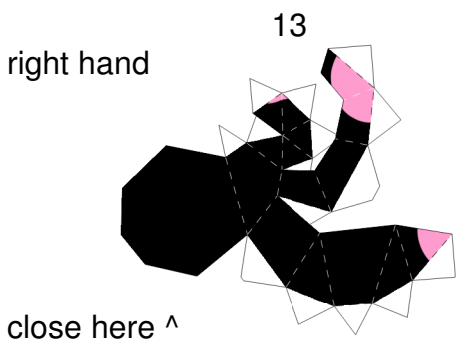
10



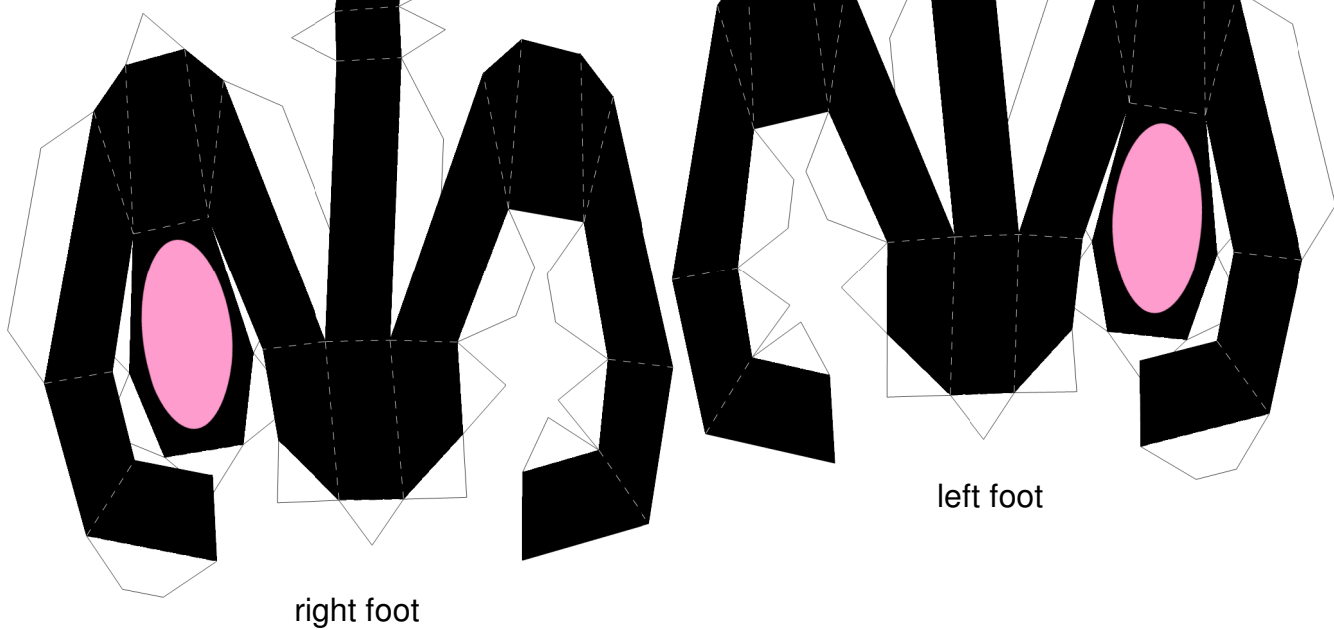
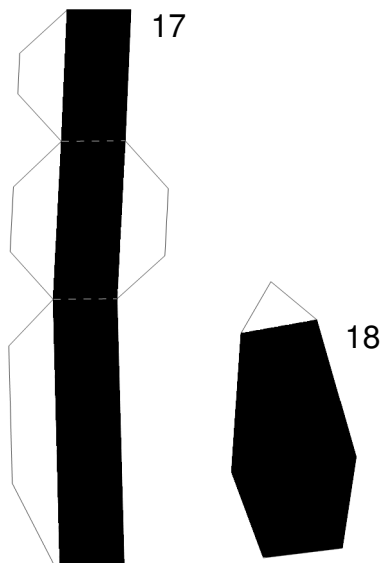
11

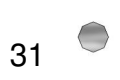
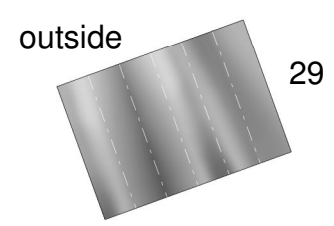
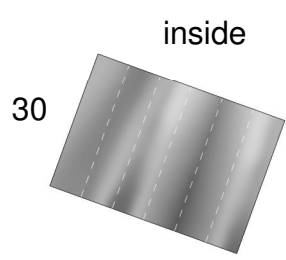
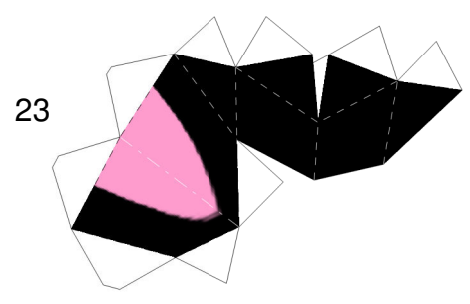
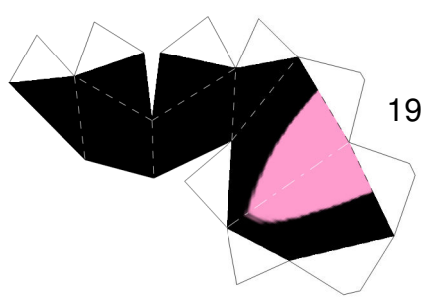
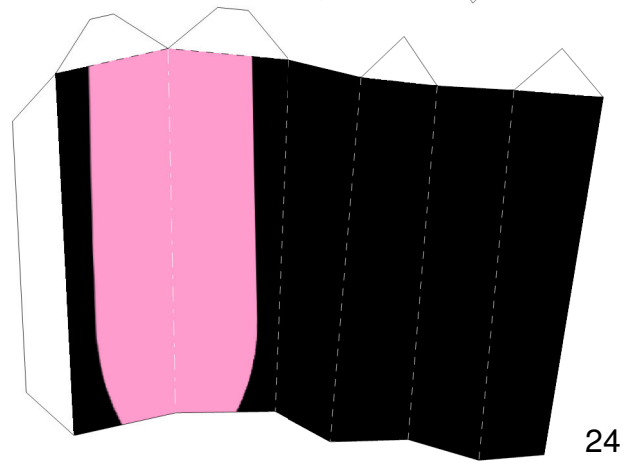
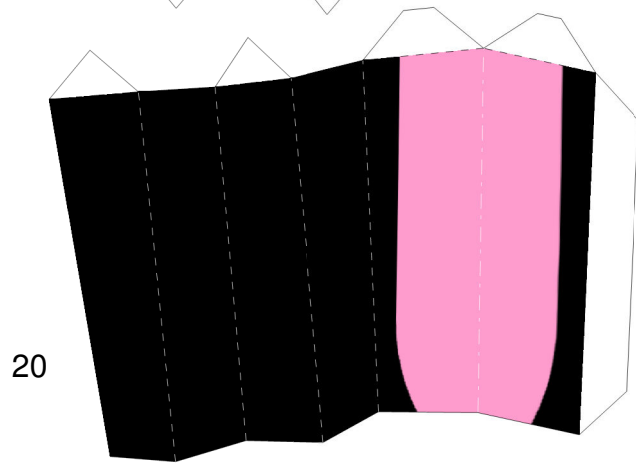
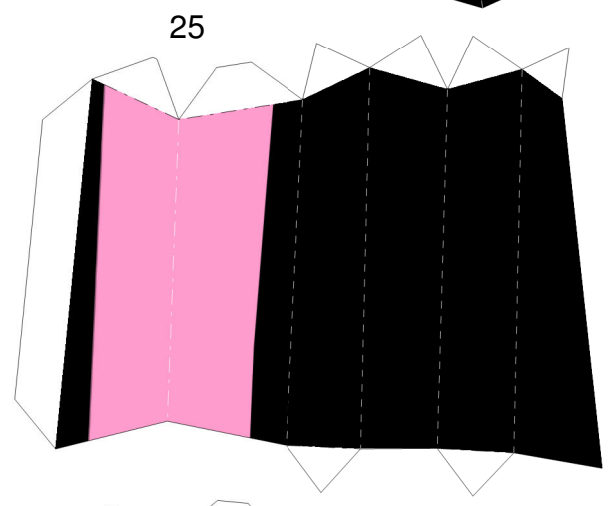
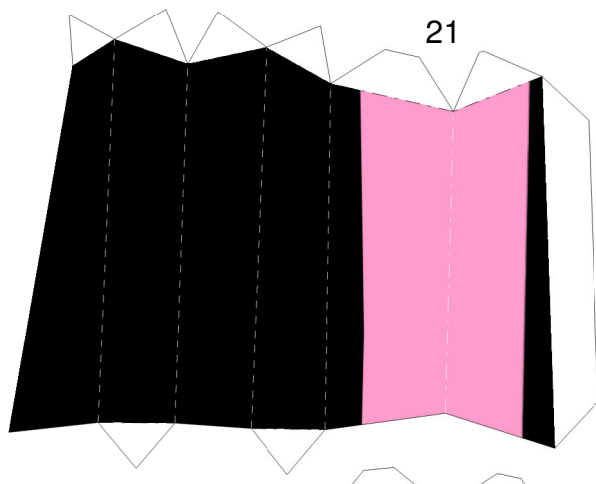
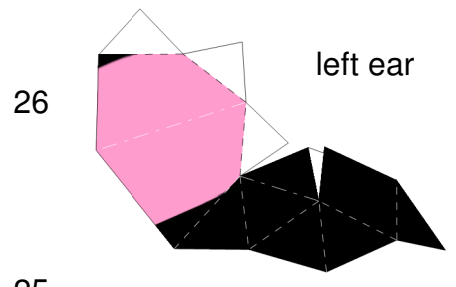
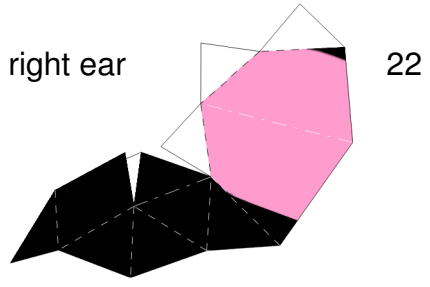


12 (bottom)
close here



Glue the only tab on piece 16 to its place on piece 15 before starting to glue the rest. Close the foot by gently pressing piece 16 on the tabs of 15. Same goes for pieces 17-18.





earring

pre-shape parts
29-30 before gluing
them back to back

