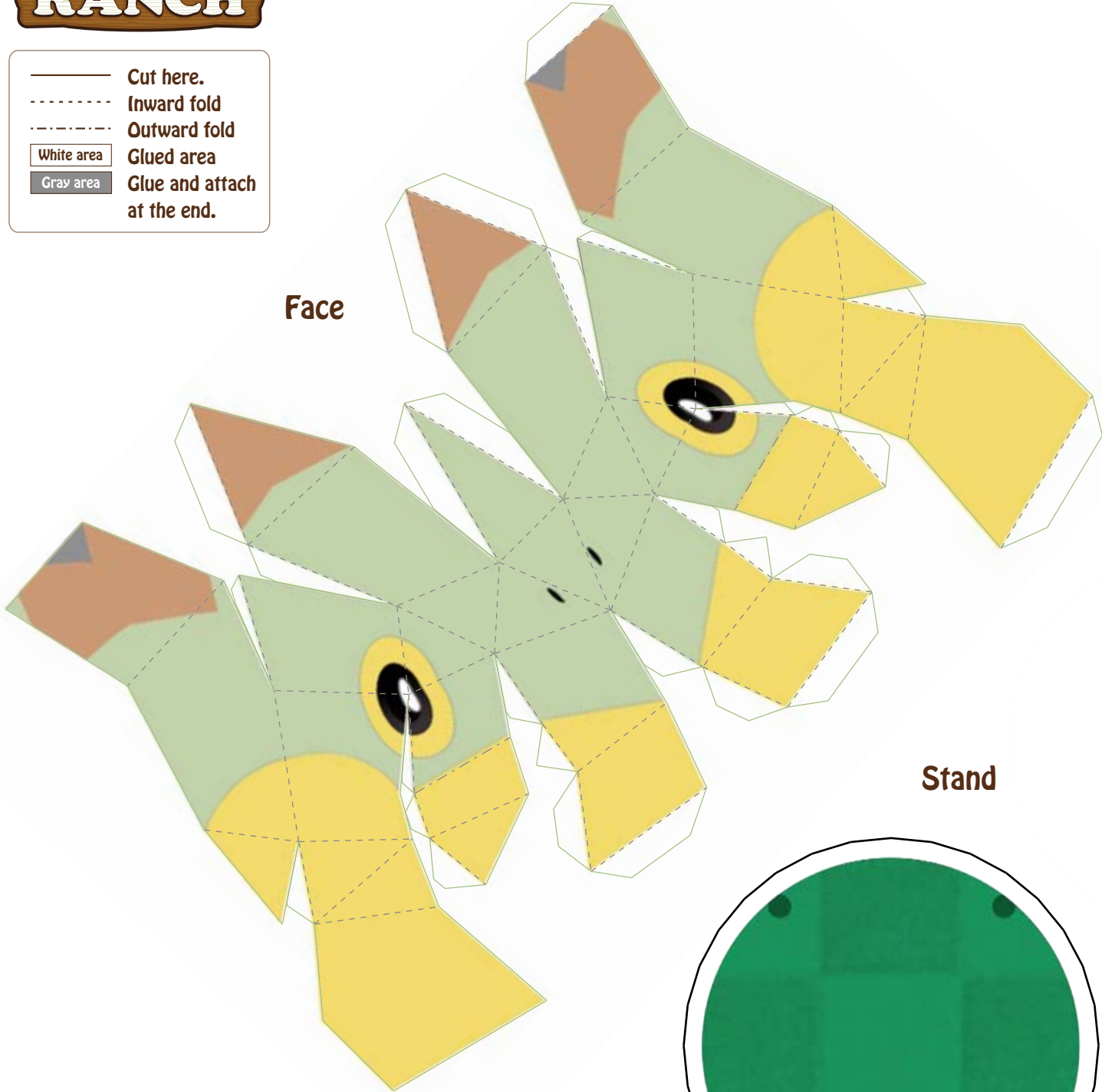




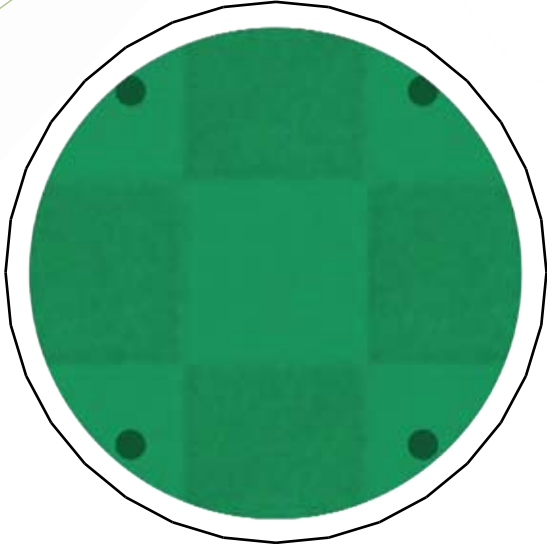
Turtwig

- Cut here.
- - - - - Inward fold
- · - · - Outward fold
- White area Glued area
- Gray area Glue and attach at the end.

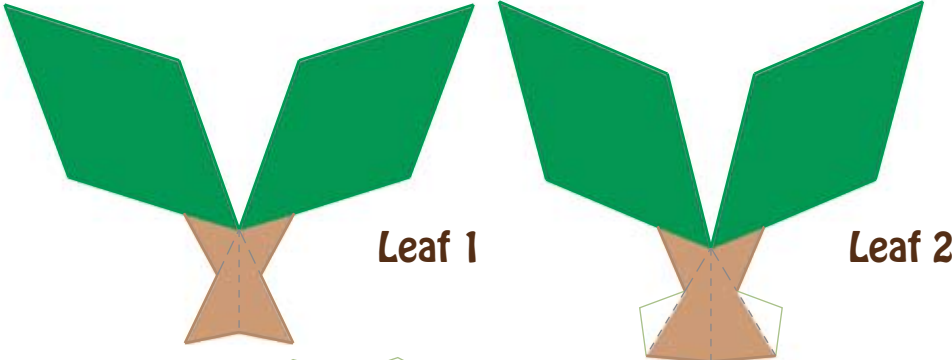
Face



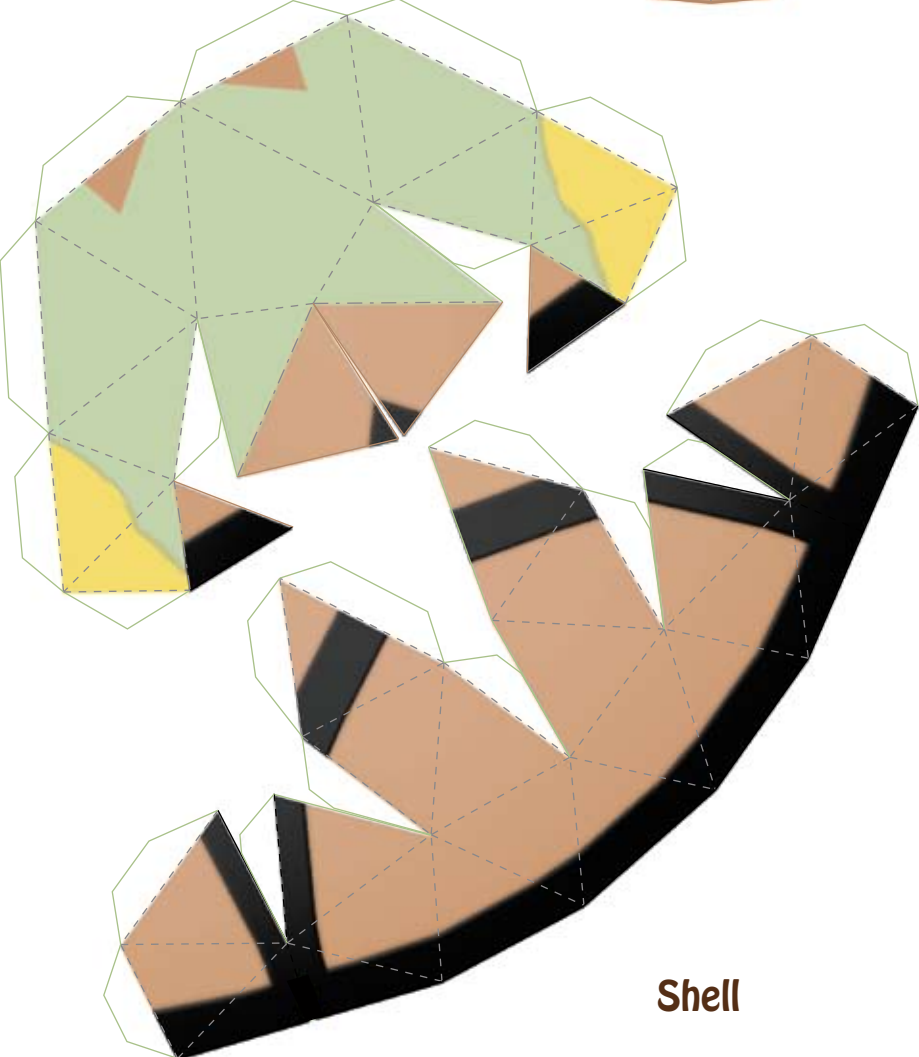
Stand



—————	Cut here.
- - - - -	Inward fold
· · · · ·	Outward fold
White area	Glued area
Gray area	Glue and attach at the end.



Neck



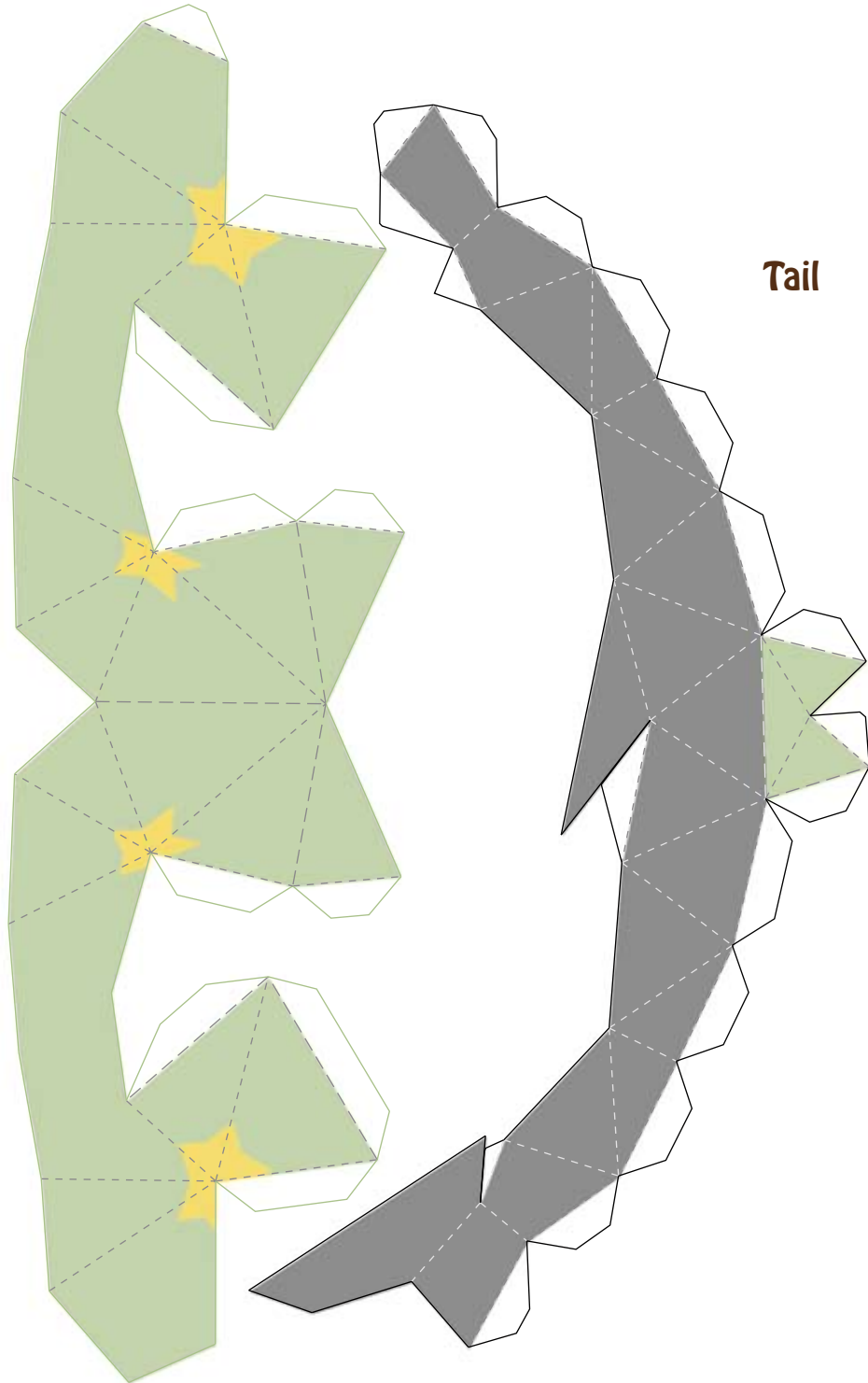
Shell



Turtwig

- Cut here.
- - - - - Inward fold
- · - · - Outward fold
- White area Glued area
- Gray area Glue and attach at the end.

Legs



Tail

### Assembly Tips

- Warning! Paper craft assembly requires the use of scissors. Small children should ask a parent or guardian for help.
- It will take approximately two hours to cut out and assemble the parts into a complete Turtwig.
- For best results, use a glue that dries quickly. Toothpicks can be useful for applying glue to small areas.
- Make sure to fold along all of the dotted lines before applying glue.
- When folding, it's easier to complete all of the outward folds before you complete the inward folds.
- When you need to apply glue, use only a small amount. Press firmly with your fingers, and give the glue time to dry.
- Assemble the pieces one at a time, and be very careful with each one. If you do, your completed Turtwig will look great!

### Leaf

First, glue the white areas on the stem, then glue the back of the Leaves. Press the Leaf pieces firmly together to make them stick.

### Face

Fold and glue the Face and the Neck pieces, then glue the Face to the Neck. Fold and glue the Shell, and finally glue the Shell to the Face and Neck.

### Body

Fold and glue the Legs and Tail pieces separately. When they are complete, glue the Legs and Tail together, starting with the Tail.

### Finishing Touches

Apply plenty of glue to the gray areas on top of Turtwig's Head and Body. Then, attach the Leaf to the head and the top of the Shell to the Body. Put glue on the bottoms of Turtwig's feet, and attach them to the Stand at the ● marks.

